



New Migrant **databank**

Peter Boden

GRO Scotland
February 12th 2009



What happens when international migrants settle?

Ethnic group population trends and projections for UK local areas

ESRC Research Award RES-165-25-0032, 2007-2009

Information on the project:

<http://www.geog.leeds.ac.uk/projects/migrants/>



- Phil Rees
- Paul Norman
- Peter Boden
Research Fellow in the School of Geography, University of Leeds
Director of Edge Analytics Ltd
- Pia Wohland

Information on the project:

<http://www.geog.leeds.ac.uk/projects/migrants/>

This presentation...



1. Migration Context
2. The development of the New Migrant Databank (NMD)
3. Patterns and trends in immigration evident from alternative sources
4. Alternative methods for sub-national estimation
5. Future research

UK - uncertainty



Daily Mail
THURSDAY, AUGUST 23, 2007 www.dailymail.co.uk 45p

574,000 | **196,000**

Asylum seekers in Bosnia ready to make an overland journey to Britain

The Dannreuther family left Hampshire in 2004 to move to Bordeaux

Number who came to live here in one year – not including illegal immigrants and the countless thousands we don't even know about

Number of British citizens who, in the same year, chose to leave this country to seek a new life for themselves and their families

FULL STORY: PAGES 10-11

UK – Lindsey Oil refinery



<http://news.bbc.co.uk/1/hi/uk/7872932.stm>



BBC NEWS LIVE BBC NEWS CHANNEL

Page last updated at 08:49 GMT, Friday, 23 May 2008 09:49 UK

[E-mail this to a friend](#) [Printable version](#)

MPs attack migrant count methods

Existing methods of estimating migration and population figures are not "fit for purpose" say MPs.

The International Passenger Survey, designed to provide data for tourism, now plays a central role in migration estimates, the committee of MPs said.



The MPs say it is "now impossible" to estimate numbers of migrants in the UK

They said it was "not fit for this purpose" and methods of measuring movement in the UK "unsatisfactory".

The committee said new surveys were needed. The Lib Dems said ministers had "totally lost track" of the population.

In its Counting the Population report, the Commons Treasury Committee accepted that the UK was in a period of "significant population change" which made it harder to estimate numbers of

UK IMMIGRATION DEBATE

LATEST STORIES

- ▶ EU migrants 'settling across UK'
- ▶ Half EU migrants 'have left UK'
- ▶ UK told not to fear immigration
- ▶ Brown rejects cap on immigration

FEATURES AND ANALYSIS

Mapping migration

How Eastern Europeans have spread across UK



- ▶ Poland entices its workers home
- ▶ If all Poles left...
- ▶ £7-per-hour jobs locals don't want
- ▶ Defusing the row?
- ▶ Shifting the economic debate

News Front Page

- World
- UK
- England
- Northern Ireland
- Scotland
- Wales
- Business
- Politics**
- Health
- Education
- Science/Nature
- Technology
- Entertainment
- Also in the news
- Video and Audio
- Have Your Say
- Magazine
- In Pictures
- Country Profiles
- Special Reports



- Alternative reviews of migration data sources:
 - Rees, P. and Boden, P. (2006) Estimating London's new migrant population: Stage 1 – review of methodology. A Report commissioned by the Greater London Authority for the Mayor of London.
 - <http://www.london.gov.uk/mayor/refugees/docs/nm-pop.pdf>
 - Green, A. E., Owen, D. and Adam, D. (2008) A resource guide on local migration statistics. Report prepared for the Local Government Association.
<http://www.lga.gov.uk/lga/publications/publication-display.do?id=1308025>



- Substantial number of studies have supplemented existing statistics with primary data collection, specifically to examine the ‘impact’ of new migrants upon:
 - Economy
 - The workplace
 - Integration and cohesion
 - Local service provision
- Some attempts at producing improved migration estimates but generally constrained by sampling difficulties

Migrant Impact - Scotland



Scotland	Summary	Coverage		Main Secondary Sources Used			Primary Data Collection					
							Migrant		Employer		Service Provider	
		Geography	Migrant	LFS	NINo	WRS	Migrant	Method	No.	Method	No.	Method
Aberdeen City Council (2007)	Migrant worker statistics	Aberdeen	All		✓	✓						
Collins (2007)	Housing, work and welfare experiences	Scotland	A8				78	Face-to-face / focus groups				
Communities Scotland (2006)	Scale, and experiences of migrant workers	Tayside	All		✓		112	Survey	47	Interview		
Fife Research Coordination Gp (2008)	Migrant worker experiences and needs	Fife	A8				904	Face-to-face				
Hall Aitken (2007)	Migrant profile and experiences	Dumfries & Galloway	A8		✓		99	Survey / interview	103	Survey		
Jentsch <i>et al</i> (2007)	Migrant workers in rural areas	Rural Scotland	A8		✓		25	Face-to-face	53	Telephone / focus group		
de Lima <i>et al</i> (2007)	Scale and profile of migrant workers	Grampian	A8		✓		87	Face-to-face / focus groups	61	Telephone	46	Telephone / focus group
Orchard et al (2007)	Migrant profile and access to services	Edinburgh	A8		✓	✓	84	Face-to-face			37	Postal / interview
Stevenson (2007)	Scale and profile of migrant workers	Glasgow	A8		✓	✓	262	Various			46	
Stirling Council (2007)	New migrant statistics	Stirling	All		✓	✓						



Purpose:

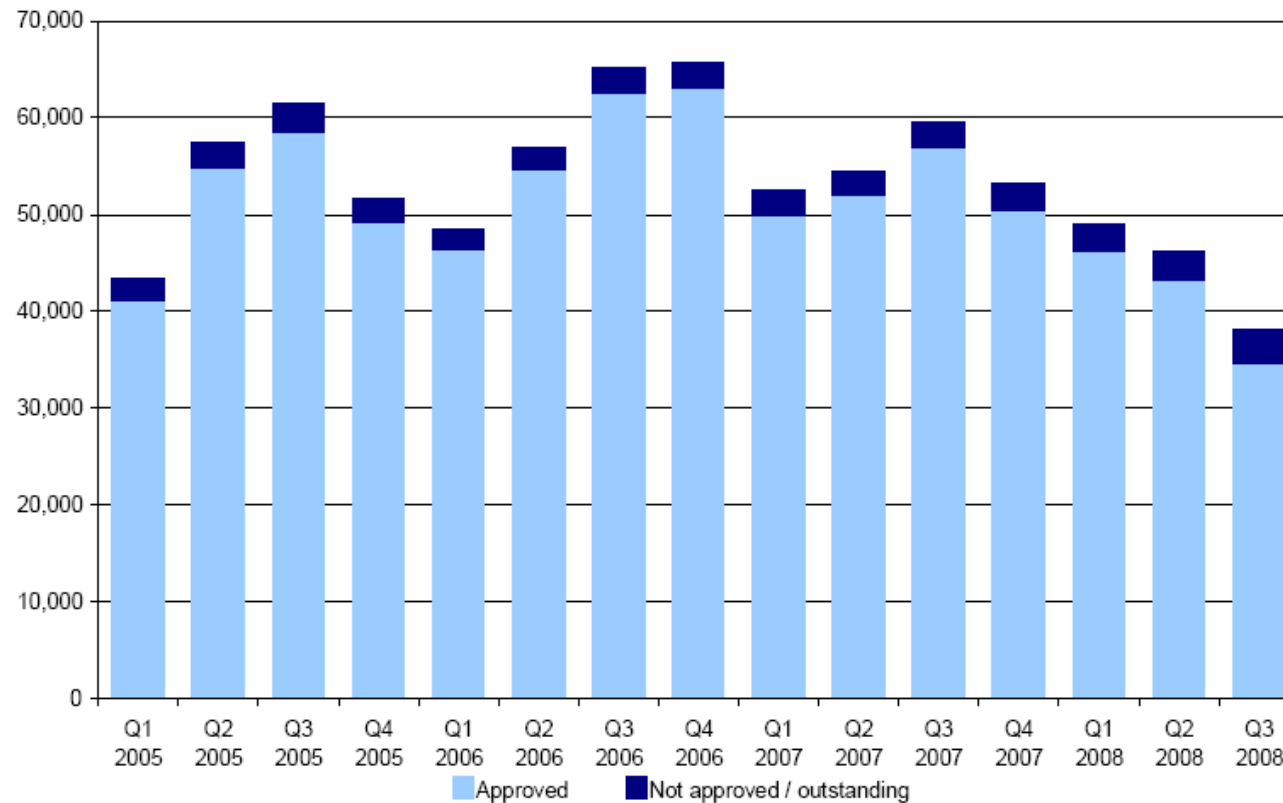
- ‘Single view’ of alternative statistics
- Clarity of conceptual and measurement differences
- Framework for analysis of trends and patterns in migration
- Analysis of short-term and long-term migration measurement
- Derivation of ethnic-group migration estimates



New Migrant **databank**

Demonstration

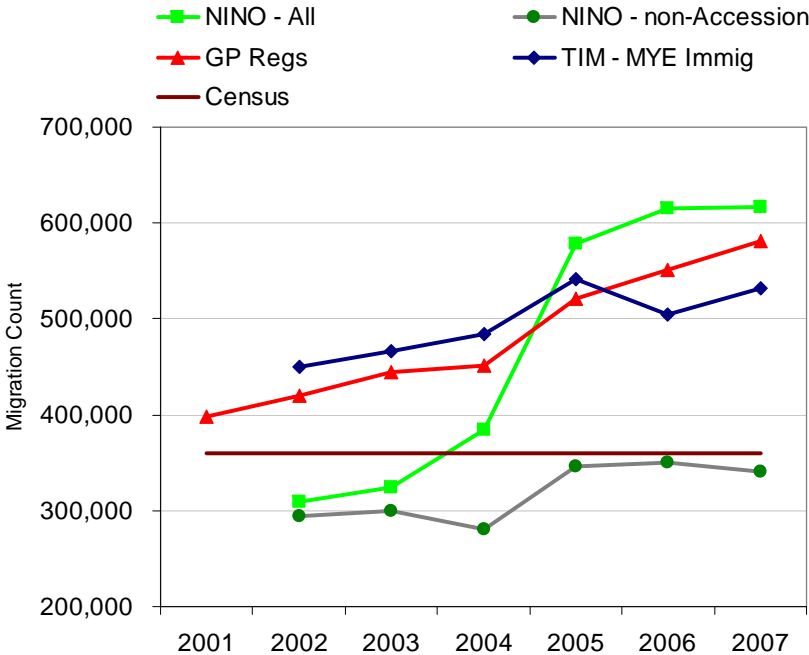
WRS – A8 migrant flows



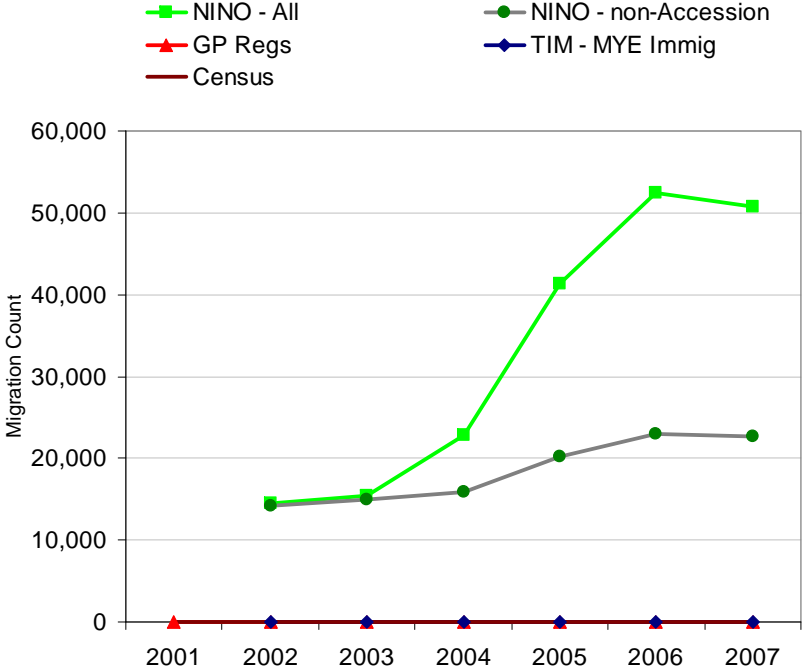
Source: Accession Monitoring Report, Home Office 2008

England – new migrant trends

England

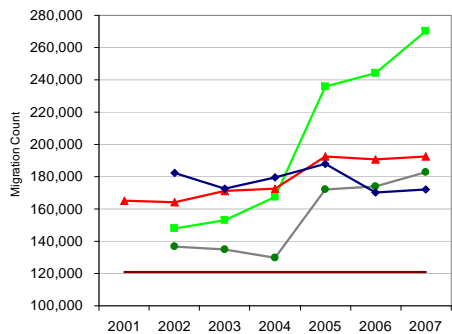


Scotland

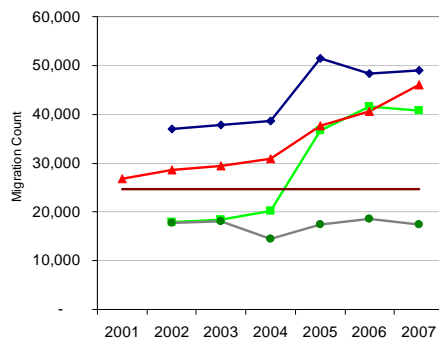


All data are Crown copyright. Sources: 100% data extract from the National Insurance Recording System (NIRS); ONS Mid-year estimates; GP registration statistics provided by ONS

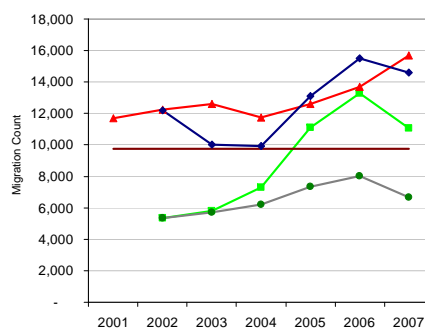
London



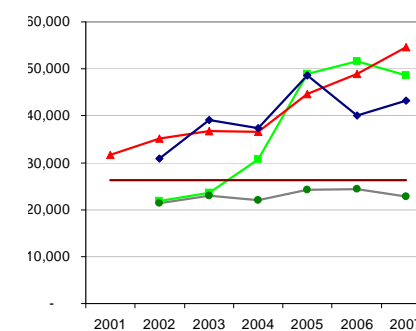
Yorks & Humb



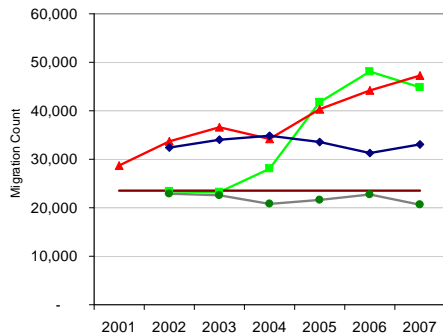
North East



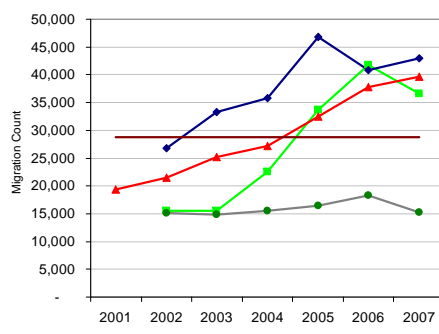
North West



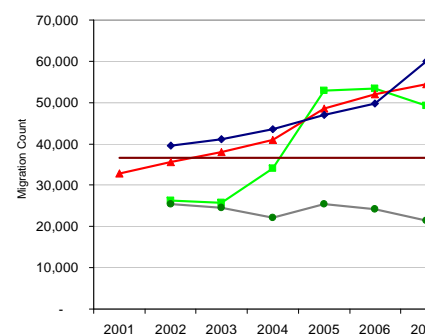
West Midlands



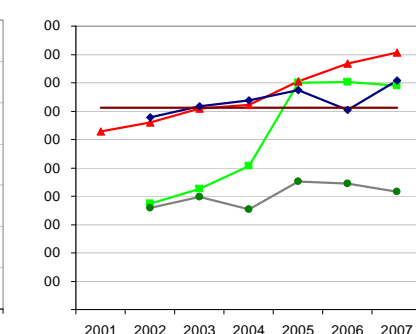
South West



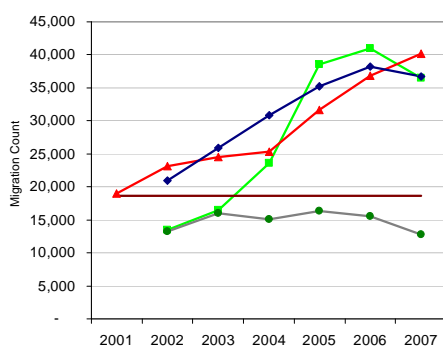
East



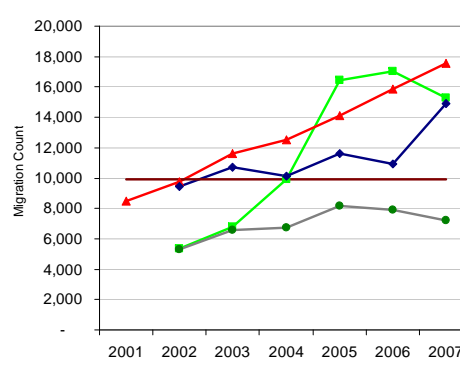
South East



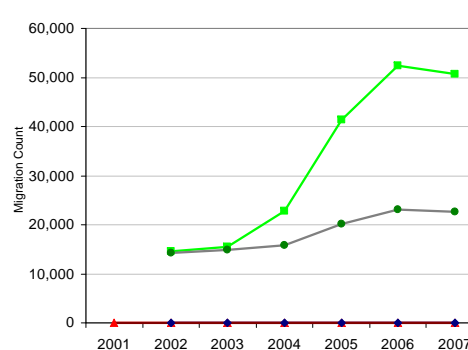
East Midlands



Wales

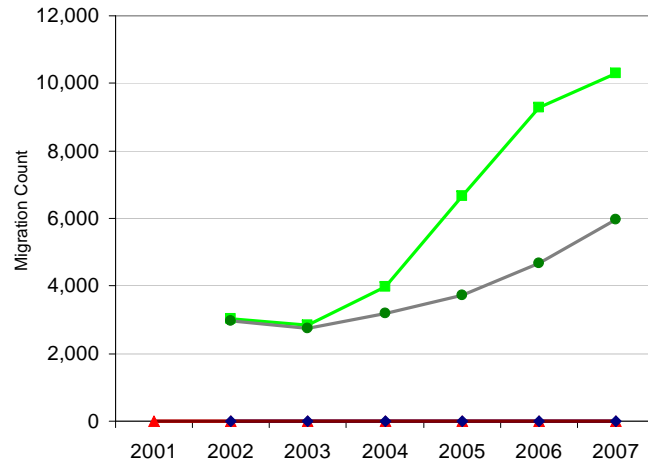


Scotland

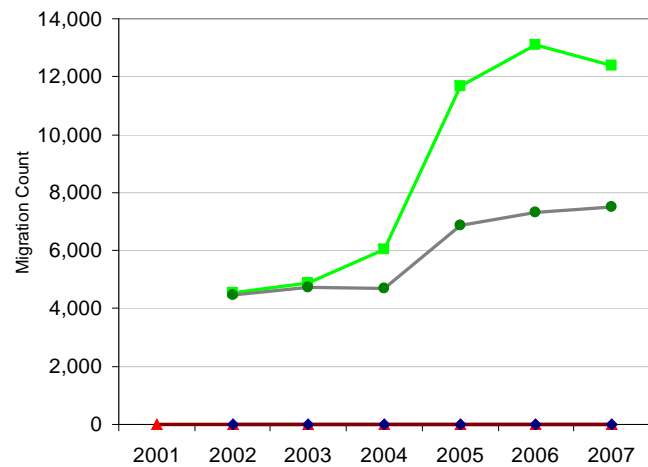


Scotland

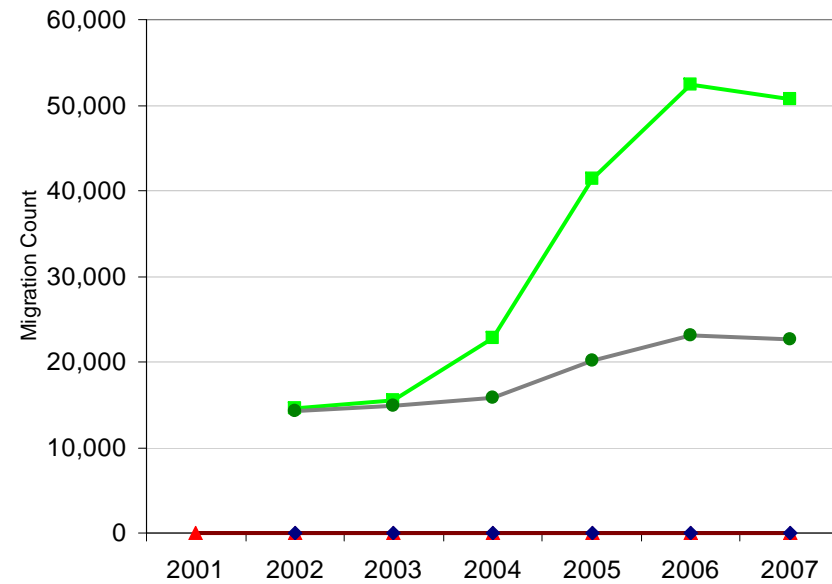
Glasgow



Edinburgh



Scotland





Estimation Methods



National Statistics

Estimates of international migration

International Passenger Survey

Primary source

+

Home Office

Asylum seekers and dependants

+

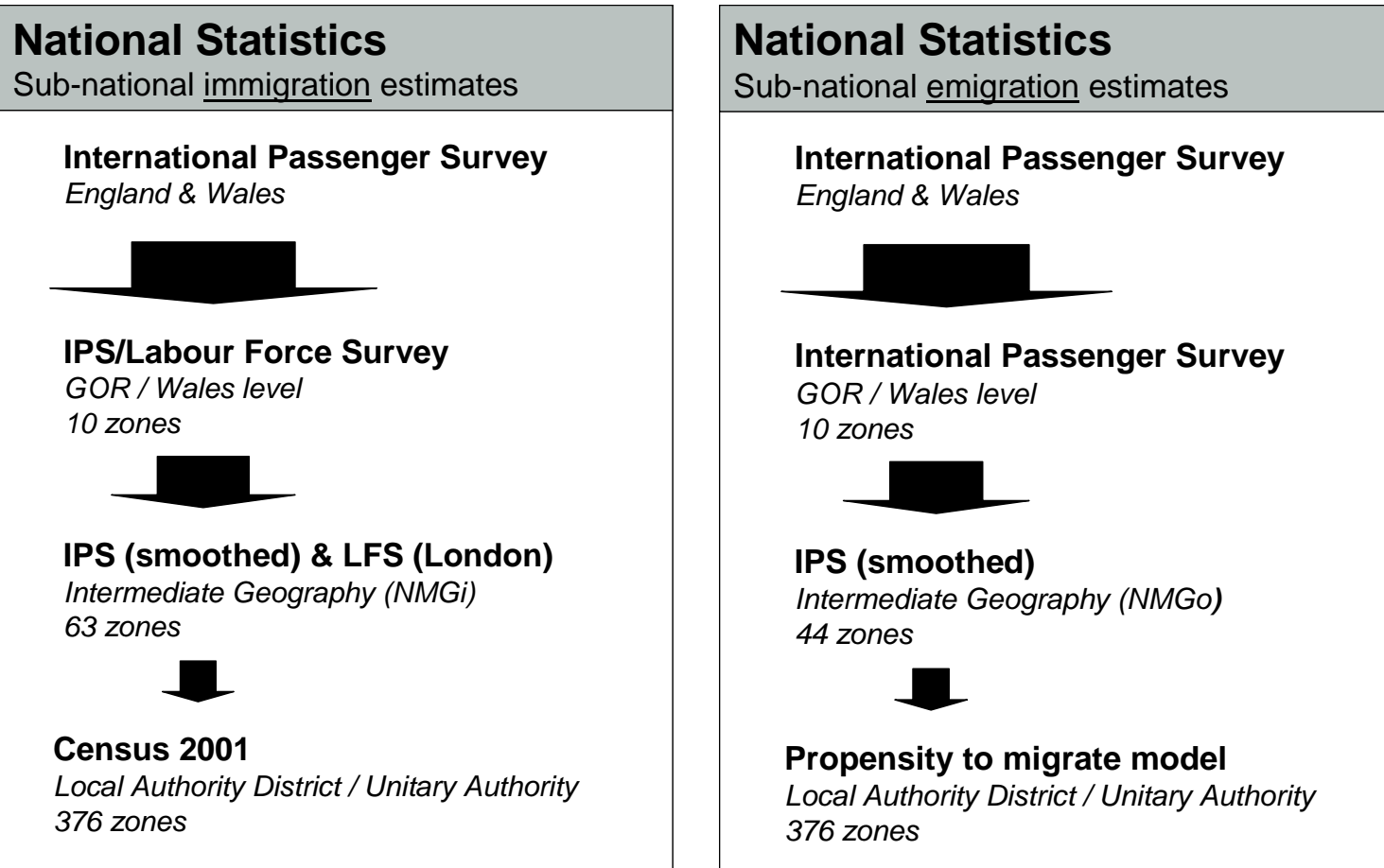
Irish CSO

Migration between UK and Irish Republic

+

Adjustments

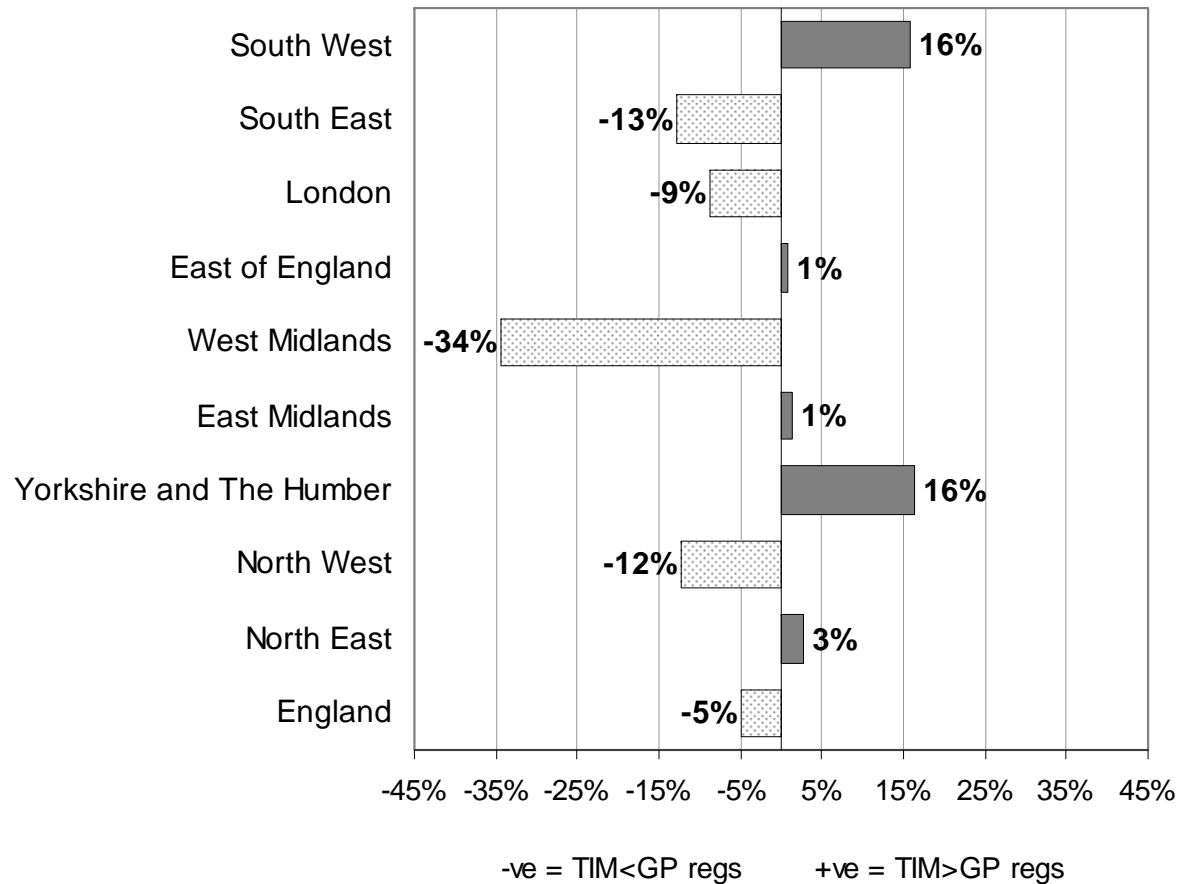
Visitor switchers & Migrant switchers





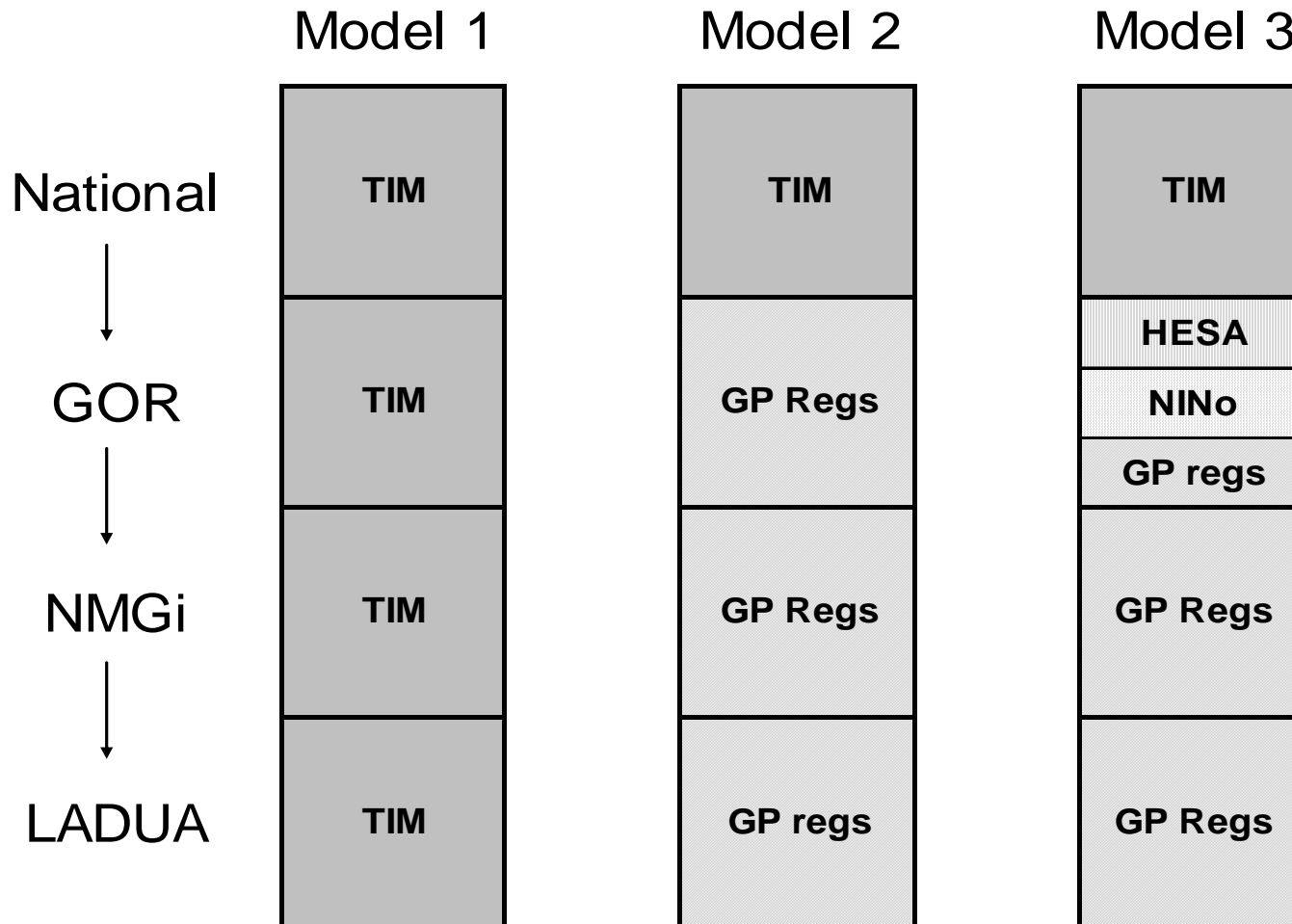
- TIM estimated for Scotland used in 2007 mid-year estimates
- Immigration
 - Immigration flows to NHS Boards (14) are allocated using overseas inflows recorded on the NHSCR
 - Distribution of migrants to Council areas (32) is based on the Community Health Index (CHI) records, controlled to the NHSCR geographic & age / sex distributions
- Emigration
 - Emigration flows to NHS Boards allocated using averaged proportions based on international inflows, outflows to the rest of the UK and the population size of each Health Board.
 - Distribution of migrants from Council areas was achieved using a combination of in-migrants to Scotland from overseas and migrants leaving Scotland for the rest of the UK.

GP Registrations vs TIM estimates

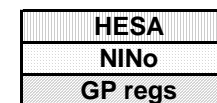
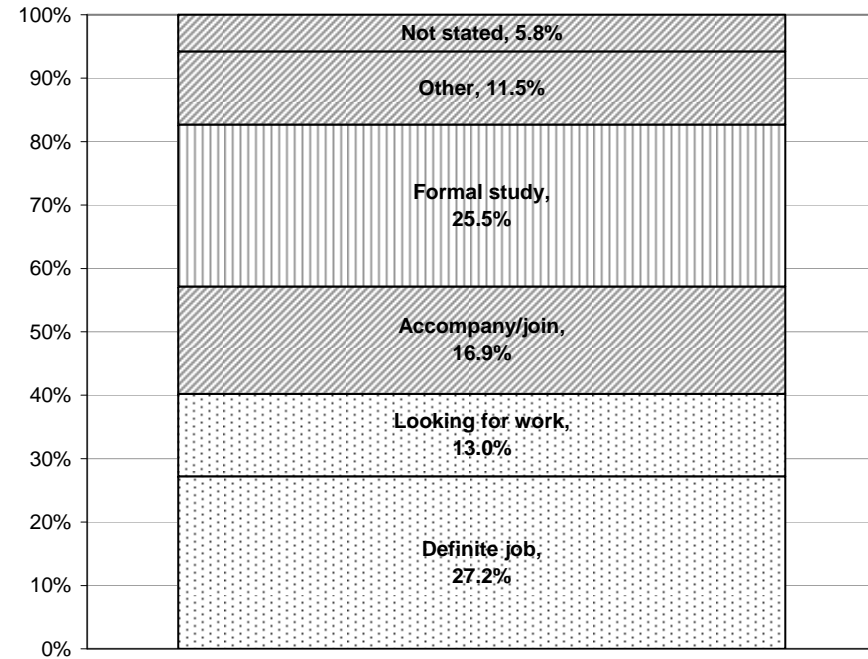
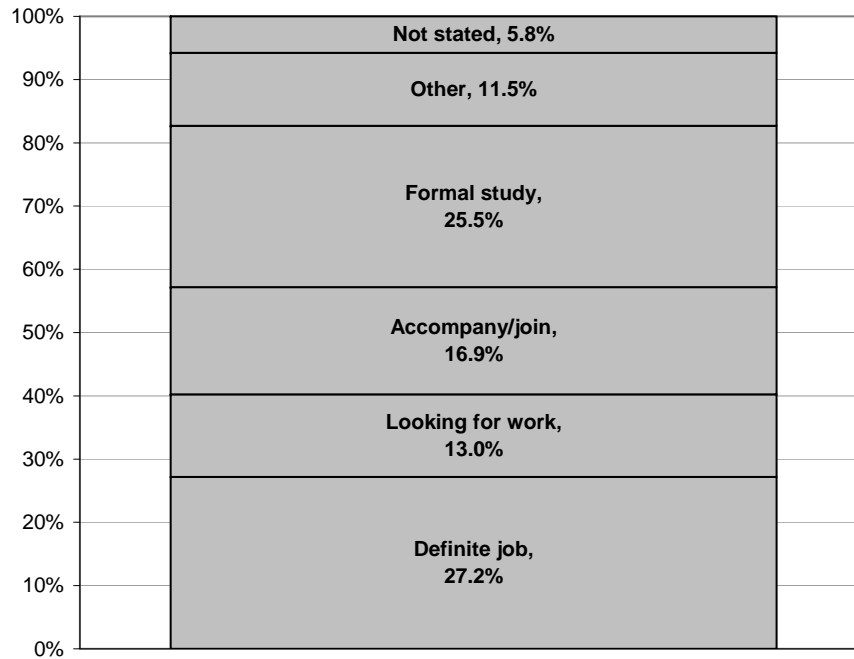


Three year comparison

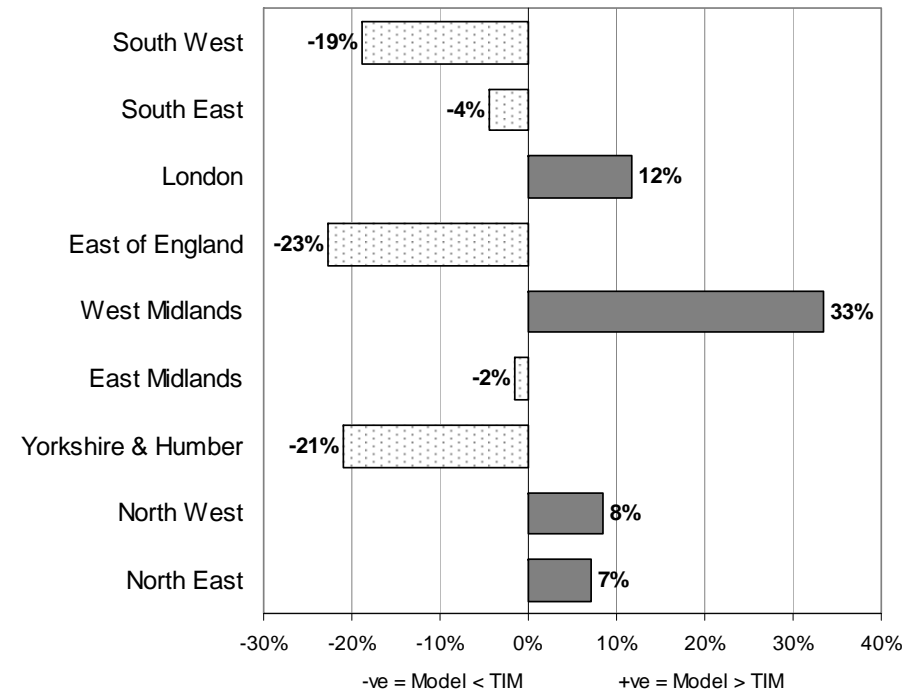
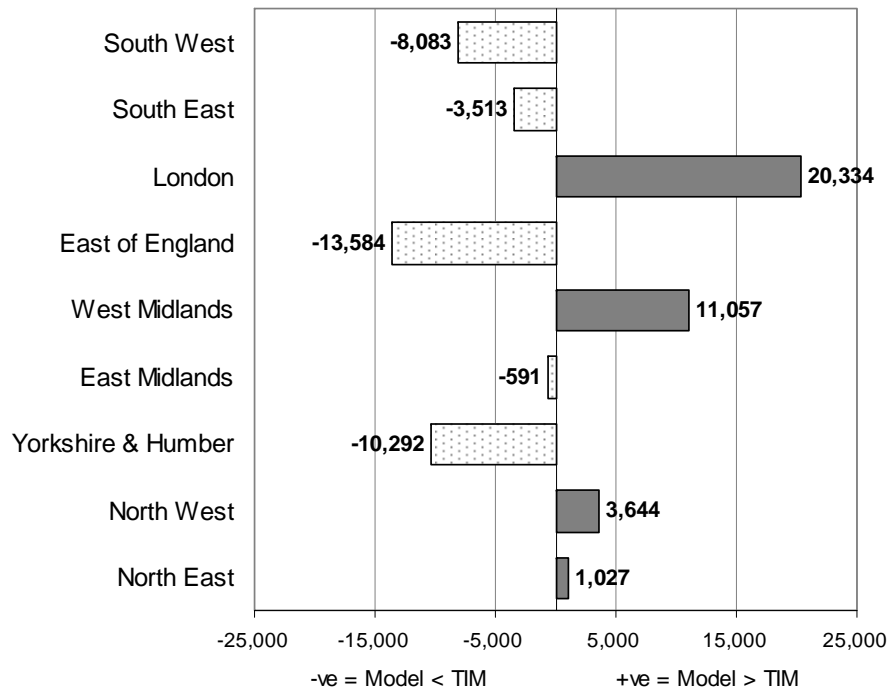
NMD - Immigration estimation



NMD - Immigration estimation



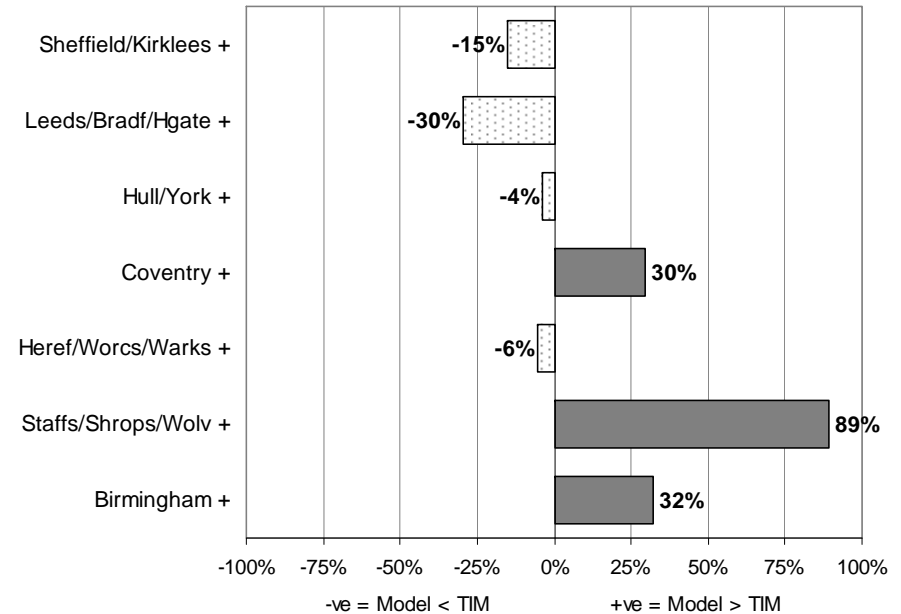
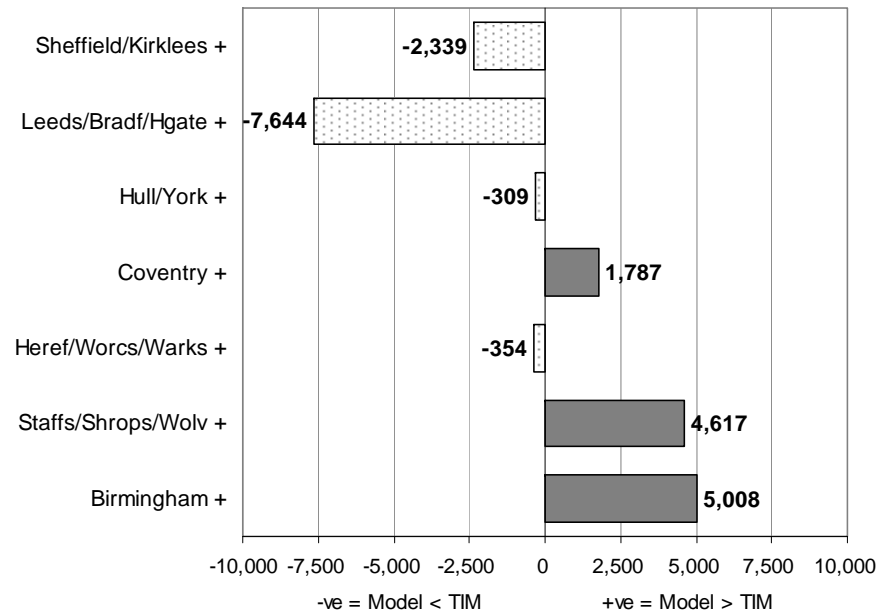
Model Estimation - Regions



Model Estimation – intermediate geography



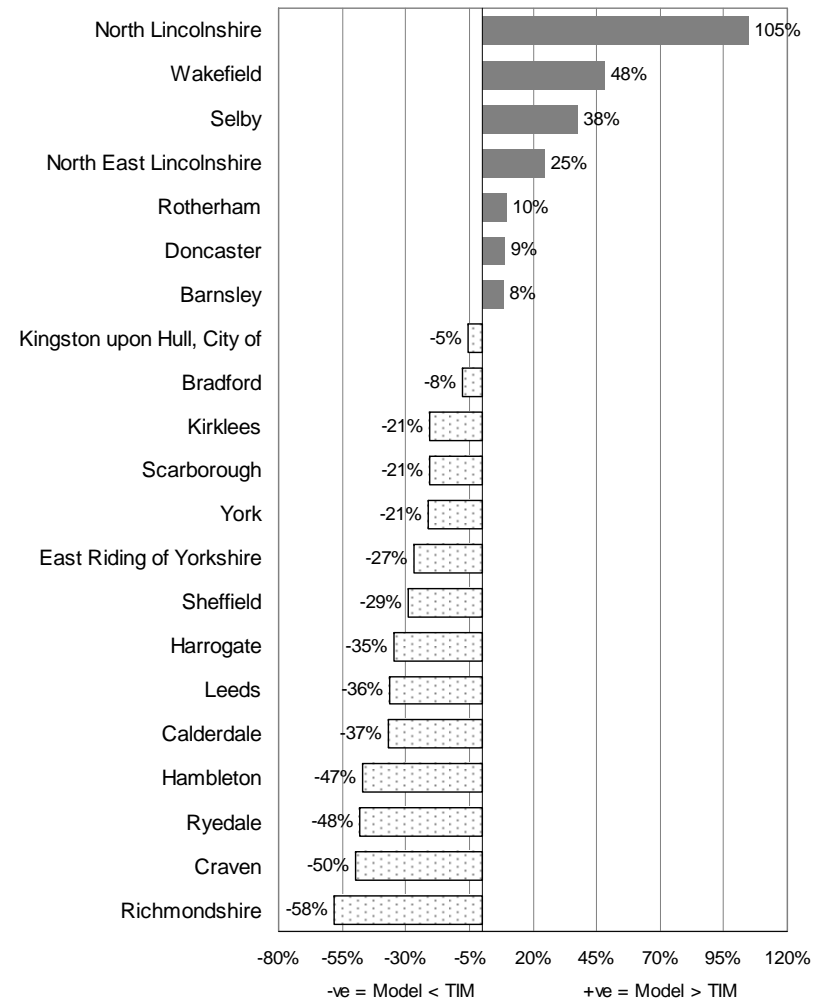
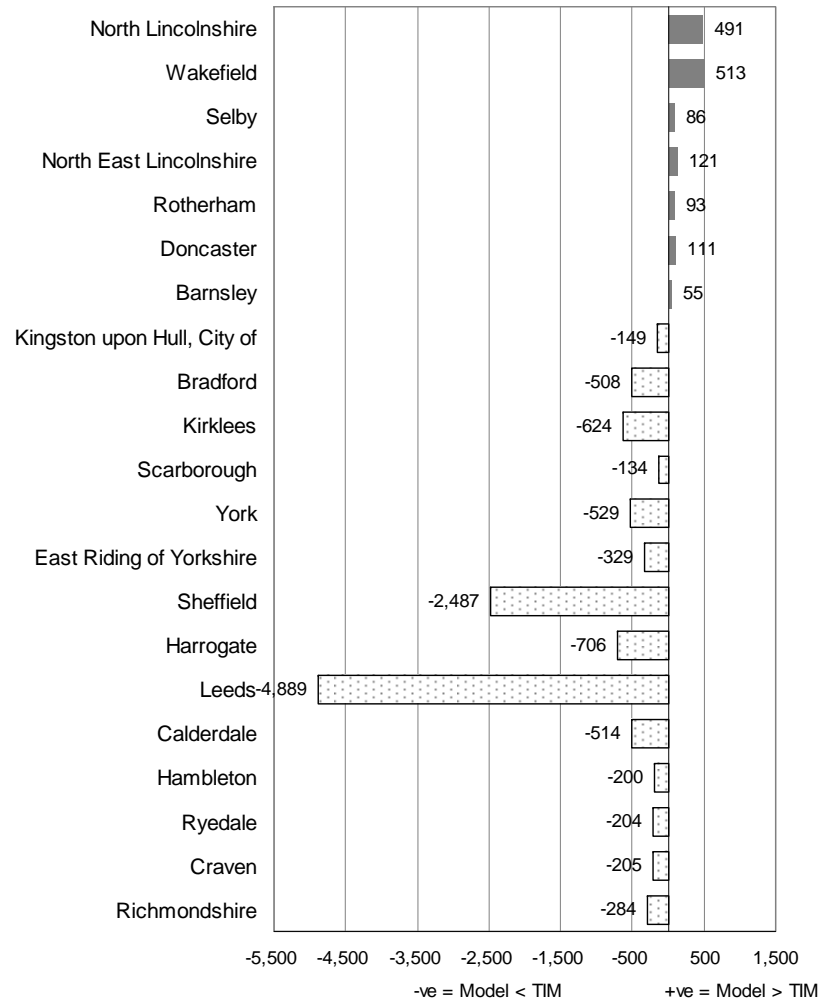
e.g. Yorkshire & Humber and West Midlands



Model estimation – Local Authority areas



e.g. Yorkshire & Humber





- For estimation purposes, trying to make maximum use of most appropriate dataset at each level
- Sample sources are subject to error at smaller spatial scales
- Census data is not appropriate for sub-national distribution given the demographic changes since 2001
- There are inconsistencies in current methods of sub-national estimation that are evident when compared to alternative administrative datasets
- Administrative datasets provide a robust alternative for distribution of sub-national immigration (the Scottish model)



- Working towards ‘alternative’ estimates of migration at all levels
- Continued development of the NMD
 - New data as it becomes available
 - Scottish datasets ?
- Development of the analysis of short-term migration and emigration



End

Information on the project:

<http://www.geog.leeds.ac.uk/projects/migrants/>